

# crosby wire rope end terminals

Issue 01



# crosby wire rope end terminals

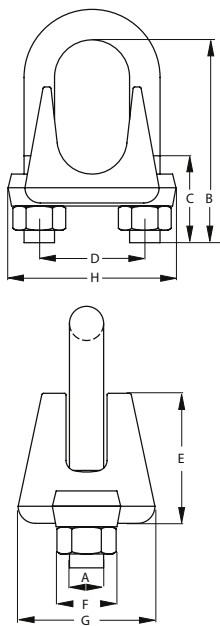
## Crosby® Forged Wire Rope Clips

### G-450



- Each base has a Product Identification Code (PIC) for material traceability, the name “CROSBY” or “CG” and a size forged into it.
- Based on the catalogue breaking strength of the wire rope, Crosby wire rope clips have an efficiency rating of 80% for 3-4mm to 22mm sizes, and 90% for sizes 24 - 26mm through to 90mm.
- Entire clip-galvanised to resist corrosive and rusting action.
- Sizes 1/8” through 2-1/2” have forged bases.
- All clips are individually bagged and tagged with proper application instructions and warning information.
- Crosby products meet or exceed all the requirements of ASME B30.26 including identification, ductility, design factor, proof load and temperature requirements. Importantly, Crosby products meet other critical performance requirements including fatigue life, not addressed by ASME B30.26.
- Look for the Red U-Bolt, your assurance of genuine Crosby clips.

Crosby clips, all sizes except 68-72mm and 85-90mm meet the performance requirements of EN13411:2003. Crosby clips, all sizes 6mm and larger, meet the performance requirements of Federal Specification FF-C-450 TYPE 1 CLASS 1, except for those provisions required of the contractor.



Rope Size mm	G-450 Stock No.	Std. Package Qty.	Weight per 100 kg	Dimensions mm							
				A	B	C	D	E	F	G	H
*3-4	1010015	100	2.72	5.60	18.3	11.2	11.9	10.4	9.65	20.6	23.9
*5	1010033	100	4.54	6.35	24.6	14.2	15.0	12.7	11.2	23.9	29.5
6-7	1010051	100	8.62	7.85	26.2	12.7	19.1	16.8	14.2	30.2	36.6
8	1010079	100	12.7	9.65	35.1	19.1	22.4	18.3	17.5	33.3	42.9
9-10	1010097	100	21.8	11.2	38.1	19.1	25.4	23.1	19.1	41.4	49.3
11	1010113	50	35.4	12.7	47.8	25.4	30.2	26.2	22.4	46.0	58.0
12-13	1010131	50	36.3	12.7	47.8	25.4	30.2	28.7	22.4	48.5	58.0
14-15	1010159	50	49.4	14.2	57.0	31.8	33.3	31.0	23.9	52.5	63.5
16	1010177	50	49.9	14.2	60.5	31.8	33.3	34.0	23.9	52.5	63.5
18-20	1010195	25	64	15.7	70.0	36.6	38.1	35.8	26.9	57.0	72.0
22	1010211	25	96	19.1	79.0	41.1	44.5	40.4	31.8	62.0	80.5
24-26	1010239	10	114	19.1	89.0	46.0	47.8	45.2	31.8	67.0	88.0
28-30	1010257	10	128	19.1	98.5	51.0	51.0	48.5	31.8	71.5	91.0
32-34	1010275	10	199	22.4	108	54.0	58.5	55.5	36.6	79.5	105
36	1010293	10	200	22.4	118	58.5	60.5	58.5	36.6	79.5	106
38	1010319	10	247	22.4	125	60.5	66.5	62.0	36.6	86.5	113
41-42	1010337	Bulk	319	25.4	135	66.5	70.0	67.5	41.4	92.0	121
44-46	1010355	Bulk	424	28.7	146	70.0	77.5	74.5	46.0	97.0	134
48-52	1010373	Bulk	590	31.8	164	76.0	86.0	83.5	51.0	113	149
56-58	1010391	Bulk	726	31.8	181	81.0	98.5	81.0	51.0	114	162
62-65	1010417	Bulk	862	31.8	195	87.5	105	93.5	51.0	103	168
**68-72	1010435	Bulk	1043	31.8	211	90.5	111	124	51.0	127	175
75-78	1010453	Bulk	1406	38.1	233	98.5	121	119	60.5	149	194
**85-90	1010426	Bulk	1814	38.1	273	114	140	152	60.5	157	213

- Each base has a Product Identification Code (PIC) for material traceability, the name “Crosby” or CG, and a size forged into it.
- Entire clip is made from 316 stainless steel to resist corrosive and rusting action.
- All components are Electro-Polished.
- All clips are individually bagged or tagged with proper application instructions and warning information.

Also available in stainless steel  
**SS-450**

Rope Size mm	G-450 Stock No.	Std. Package Qty.	Weight per 100 kg	Dimensions mm							
				A	B	C	D	E	F	G	H
3-4	1010015	100	2.72	5.60	18.3	11.2	11.9	10.4	9.65	20.6	23.9
5	1010033	100	4.54	6.35	24.6	14.2	15.0	12.7	11.2	23.9	29.5
6-7	1010051	100	8.62	7.85	26.2	12.7	19.1	16.8	14.2	30.2	36.6
8	1010079	100	12.7	9.65	35.1	19.1	22.4	18.3	17.5	33.3	42.9
9-10	1010097	100	21.8	11.2	38.1	19.1	25.4	23.1	19.1	41.4	49.3
11	1010113	50	35.4	12.7	47.8	25.4	30.2	26.2	22.4	46.0	58.0

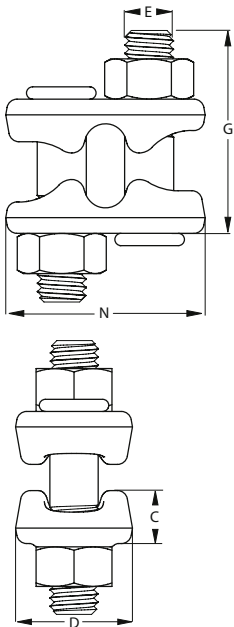
# crosby wire rope end terminals

## Crosby® Fist Grip Wire Rope Clips



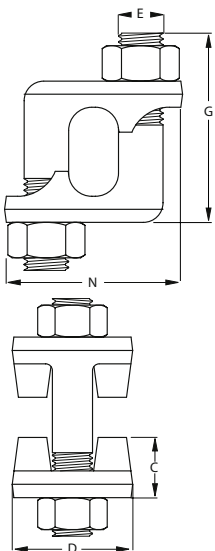
- Entire clip is galvanised to resist corrosive and rusting action.
- Based on the catalogue breaking strength of the wire rope, Crosby wire rope clips have an efficiency rating of 80% for 3-4mm to 22mm sizes and 90% for sizes 26-26 through to 90mm.
- Bolts are an integral part of the saddle. Nuts can be installed in such a way as to enable the operator to swing the wrench in a full arc for fast installation.
- All sizes have forged steel saddles.
- All clips are individually bagged and tagged with proper application instructions and warning information.
- Crosby products meet or exceed all the requirements of ASME B30.26 including identification, ductility, design factor, proof load and temperature requirements. Importantly, Crosby products meet other critical performance requirements including fatigue life, not addressed by ASME B30.26.
- Assembled with standard heavy hex nuts.

3/16" - 5/8"



Rope Size mm	G-429 Stock No.	Std. Package Qty.	Weight per 100 kg	Dimensions mm				
				C	D	E	G	N
5-7	1010471	100	10.4	10.2	23.9	9.65	32.5	36.6
8	1010499	100	12.7	11.9	26.9	9.65	37.3	39.1
10	1010514	50	18.1	13.0	26.9	11.2	46.0	45.2
11-13	1010532	50	28.1	15.0	31.8	12.7	55.5	54.6
14-16	1010550	50	46.7	18.3	38.1	16.0	68.5	65.3
18-20	1010578	25	79	21.8	46.0	19.1	74.5	67.8
22	1010596	25	102	24.6	53.8	19.1	84.0	72.6
24-26	1010612	10	136	28.7	57.0	19.1	94.5	77.7
28-30	1010630	10	181	32.5	60.5	22.4	107	87.4
32-34	1010658	10	181	34.0	63.5	22.4	108	90.4
36-40	1010676	Bulk	318	39.6	76.0	25.4	141	105

3/4" - 1 1/2"



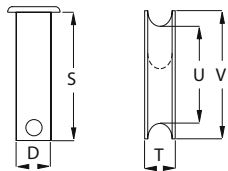
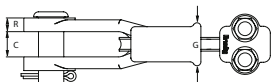
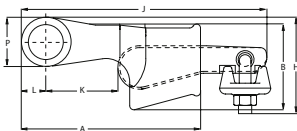
# crosby wire rope end terminals

## Crosby® S-421T Wedge Sockets

### S-421T



- Basket is cast steel.
- Wedge socket terminations have an efficiency rating of 80% based on the catalogue strength of XXIP wire rope.
- Crosby products meet or exceed all the requirements of ASME B30.26 including identification, ductility, design factor, proof load and temperature requirements. Importantly, Crosby products meet other critical performance requirements including fatigue life, not addressed by ASME B30.26.
- Individually magnetic particle inspected.
- Pin diameter and jaw opening allows wedge and socket to be used in conjunction with open swage and spelter sockets.
- Secures the tail or “dead end” of the wire rope to the wedge, thus eliminates loss or “Punch out” of the wedge.
- Eliminates the need for an extra piece of rope and is easy installed.
- The TERMINATOR™ wedge eliminates the potential breaking off of the tail due to fatigue.
- The tail, which is secured by the base of the clip and the wedge, is left unaltered and available for re-use.
- Incorporates Crosby’s patented QUIC-CHECK® “Go” and “No-Go” feature cast into the wedge. The proper size rope is determined when the following criteria are met:
  - The wire rope should pass through the “Go” hole in the wedge.
  - The wire rope should not pass through the “No-Go” hole in the wedge.
- The standard S-421 wedge socket can be retrofitted with the new style TERMINATOR™ wedge.
- Available with bolt, nut and cotter pin.
- US Patent 5.553.360 and foreign equivalents.



### S-421T Wedge Sockets

Wire Rope Dia (mm)	S-421T Stock No.*	Weight Each (kgs)	S-421TW Stock No. Wedge only	Wedge only Weight Each (kgs)	Optional G-4082 Bolt, Nut & Cotter	
					G-4082 Stock No.	G-4082 Weight Each (kgs)
9-10	1035000	1.44	1035555	0.23	1092227	0.17
11-13	1035009	2.79	1035564	0.48	1092236	0.31
14-16	1035018	4.40	1035573	0.81	1092254	0.52
18-19	1035027	6.58	1035582	1.18	1092281	0.86
20-22	1035036	9.75	1035591	1.82	1092307	1.46
24-26	1035045	13.9	1035600	2.44	1092325	2.44
28	1035054	20.5	1035609	3.56	1092343	3.40
30-32	1035063	29.4	1035618	4.80	1092372	4.70

Wire Rope Dia mm	S-421T Stock No.*	Dimensions mm														
		A	B	C	D	G	H	J	K	L	P	R	S	T	U	V
9-10	1035000	145	69.1	20.6	20.6	35.1	77.7	198	47.8	22.4	39.6	11.2	54.1	11.2	31.8	35.1
11-13	1035009	175	88.1	25.4	25.4	41.1	95.5	226	32.0	26.9	49.3	12.7	65.0	13.5	44.5	47.8
14-16	1035018	210	109	31.8	30.2	53.8	114	273	50.5	31.0	57.2	14.2	82.6	17.5	51.0	55.5
18-19	1035027	251	130	38.1	35.1	62.0	134	314	61.2	35.6	66.8	16.8	92.2	19.8	59.5	65.0
20-22	1035036	286	149	44.5	41.4	68.5	156	365	63.0	42.4	79.5	19.1	109	22.4	68.5	74.5
24-26	1035045	325	161	51.0	51.0	74.7	177	414	77.2	51.0	95.5	22.4	119	26.2	73.0	83.5
28	1035054	365	176	57.0	57.0	84.0	194	466	65.0	57.0	108	25.4	138	27.9	82.6	90.5
30-32	1035063	415	222	66.5	63.5	90.5	239	520	74.7	59.5	114	26.9	156	30.2	117	125

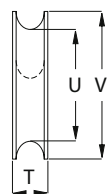
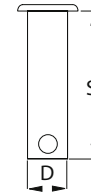
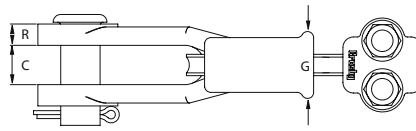
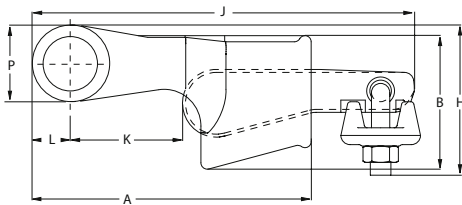
\* S-421T Terminator™ Assembly includes socket, wedge, pin and wire rope clip.

NOTE: For intermediate wire rope sizes, use next larger size socket.

# crosby wire rope end terminals

## Crosby® US-422T Utility Wedge Sockets

- Basket is cast steel.
- Wedge socket terminations have an efficiency rating of 80% based on the catalogue strength of XXIP wire rope.
- Wedges are colour coded for easy identification.
- Blue - largest wire line size for socket.
- Black - mid size wire line for socket.
- 7/16" for US4
- 9/16" for US5
- Orange - smallest wire line size for socket.
- Cast into each wedge is the model number of the socket and the wire line size for which the wedge is to be used.
- Cast into each socket is the name "McKissick", "Crosby" or "CG", its model number and its wire line range.
- By simply changing the wedge, each socket can be utilised for various wire line sizes. (Ensure correct wedge is used for wire rope size).
- Load pin is forged and headed on one end.
- US-422 wedge sockets contain a hammer pad (lip) to assist in proper security of termination.
- Crosby products meet or exceed all the requirements of ASME B30.26 including identification, ductility, design factor, proof load and temperature requirements. Importantly, Crosby products meet other critical performance requirements including fatigue life, not addressed by ASME B30.26.
- UWO-422 wedges are only to be used with the US-422 wedge socket assemblies.



### US-422T Utility Wedge Sockets

Model No.	Wire Rope Size mm	US-422T Stock No.	Weight Each (kgs)	Wedge Only Stock No.	Weight Each (kgs)	Dimensions mm														
						A	B	C	D	G	H	J	K	L	P	R	S	T	U	V
US4T	10	1044300	2.09	1047310	0.27	173	90.2	25.4	25.4	41.4	71.4	214	35.1	26.9	49.3	12.7	64.3	11.2	48.5	54.4
US4T	11	1044309	2.09	1047301	0.27	173	90.2	25.4	25.4	41.4	71.4	222	27.4	26.9	49.3	12.7	64.3	13.5	44.7	47.8
US4T	13	1044318	2.09	1047329	0.27	173	90.2	25.4	25.4	41.4	71.4	222	25.9	26.9	49.3	12.7	64.3	13.5	44.7	47.8
US5T	13	1044327	3.86	1047338	0.45	233	107	35.8	31.8	54.1	84.1	284	46.7	38.1	76.2	16.0	82.6	19.1	48.8	54.9
US5T	14	1044336	3.86	1047347	0.45	233	107	35.8	31.8	54.1	84.1	291	61.0	38.1	76.2	16.0	82.6	17.5	50.8	55.4
US5T	16	1044345	3.86	1047356	0.45	233	107	35.8	31.8	54.1	84.1	291	59.4	38.1	76.2	16.0	82.6	17.5	50.8	55.4
US6T	16	1044354	4.26	1047365	0.64	240	119	38.1	31.8	56.9	92.2	303	63.0	38.1	76.2	14.2	82.6	22.4	60.5	69.9
US6T	19	1044363	4.26	1047374	0.64	240	119	38.1	31.8	56.9	92.2	300	51.6	38.1	76.2	14.2	82.6	22.4	54.1	66.8
US8AT	16	1044372	9.0	1047383	1.9	269	144	46.0	41.4	60.5	140	335	48.5	38.9	73.2	19.1	105	17.5	82.8	88.9
US8AT	19	1044381	9.3	1047392	2.2	269	144	46.0	41.4	60.5	148	344	60.5	38.9	73.2	19.1	105	19.8	79.2	85.9
US7†	22	1038580	7.48	1046674	1.18	286	130	33.3	31.8	68.3	-	-	65.0	41.4	82.8	16.8	82.6	26.9	53.8	65.0
US7*	25	1038589	7.48	1046683	1.18	286	130	33.3	31.8	68.3	-	-	65.0	41.4	82.8	16.8	82.6	26.9	47.8	60.5
US8T	22	1044404	14.3	1047425†	3.4	324	177	46.0	41.4	77.7	183	407	72.9	41.9	79.2	19.1	105	22.4	98.6	106
US8T	25	1044417	14.7	1047431	3.9	324	177	46.0	41.4	77.7	186	417	58.9	41.9	79.2	19.1	105	26.2	95.5	103
US10T	28	1044426	25.1	1047440	5.7	405	219	46.0	41.4	90.7	232	501	82.8	55.6	111	19.1	105	27.7	121	129
US10T	32	1044435	26.3	1047459	6.8	405	219	46.0	41.1	90.7	239	514	71.9	55.6	111	19.1	105	30.2	117	125
US11T	28	1044444	27.5	1047468	5.7	415	222	66.5	63.5	90.4	232	507	85.6	59.4	114	26.9	156	27.7	121	129
US11T	32	1044453	29.4	1047477	6.8	415	222	66.5	63.5	90.4	239	520	74.7	59.4	114	26.9	156	30.2	117	125

\* UWO-422T Terminator™ Style

† Non Terminator™ Style

NOTE: For intermediate wire rope sizes, use next larger size socket.



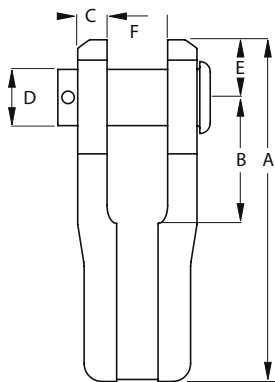
# crosby wire rope end terminals

## Crosby® Button Spelter Sockets

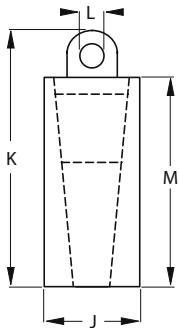
### SB-427



- Available in six sizes for 1/2" to 1-1/2".
- Button spelter terminations have a 100% efficiency rating, based on the strength of the wire rope.
- Designed for use with mobile cranes. Can be used to terminate high performance, rotation resistant ropes and standard 6 strand ropes.
- Easy to install assembly utilizes Crosby WIRELOCK® socketing compound.
- Sockets and buttons are re-usable.
- Replacement buttons and sockets are available.



Wire Rope Size		SB-427 Stock No.	Weight Each kgs	Socket only Stock No.	Button Only Stock No.	Dimensions mm								
(In.)	(mm)					A	B	C	D	E	F	J	K	L
1/2 - 5/8	13-16	1052005	2.76	1052107	1052309	183	67.6	32.5	30.2	31.0	15.7	38.1	88.9	6.35
5/8 - 3/4	16-19	1052014	4.67	1052116	1052318	217	79.2	38.8	35.1	36.6	19.1	44.5	109	9.65
3/4 - 7/8	19-23	1052023	7.75	1052125	1052327	254	92.0	45.2	41.1	42.9	22.4	52.3	121	9.65
7/8 - 1	22-26	1052032	13.24	1052134	1052336	298	111	51.6	51.0	51.0	26.2	61.9	143	15.7
1 1/8 - 1 1/4	28-32	1052041	20.86	1052143	1052345	351	127	64.3	57.2	63.5	28.2	74.7	180	19.1
1 3/8 - 1 1/2	35-38	1052050	35.38	1052152	1052354	424	152	77.0	69.9	79.2	32.3	91.9	205	19.1



Wire Rope Size		WIRELOCK Required (cc)	WIRELOCK Stock No.	WIRELOCK Kit Size (cc)
(In.)	(mm)			
1/2 - 5/8	13-16	35	1039602	100
5/8 - 3/4	16-19	60	1039602	100
3/4 - 7/8	19-23	100	1039602	100
7/8 - 1	22-26	140	1039602*	100
1 1/8 - 1 1/4	28-32	250	1039604	250
1 3/8 - 1 1/2	35-38	420	1039606	500

# crosby wire rope end terminals

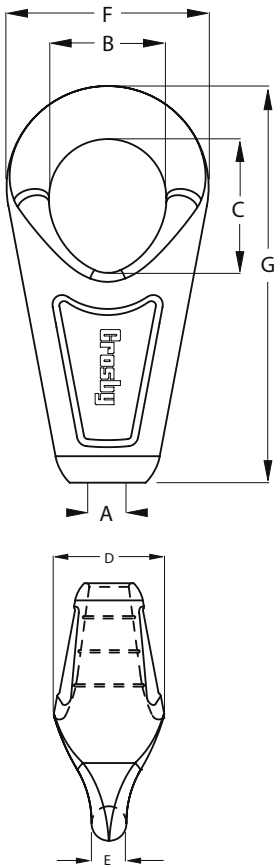
## Crosby® Mooring Sockets

### G-517



- Wide range of sizes available:  
- 2" through 3-5/8" Wire Line
- "M-Line" socket terminations have a 100% efficiency rating, based on the catalogue strength of the wire rope.
- Galvanised finish.
- Designed for today's higher strength classes of wire rope.
- Design of bail allows for easy connection to shackles and other connecting links.
- Socket design utilizes features to keep cone from rotating.

### G-517 "M-Line" Mooring Sockets



Rope Dia mm	G-517 Stock No.	Weight Each kgs	Dimensions mm						
			A	B	C	D	E	F	G
50-54	1005002	25.8	63.5	121	133	178	53.1	210	407
57-60	1005020	34.5	70.5	133	146	196	58.7	233	455
64-67	1005048	47.6	77.5	149	170	217	68.3	257	505
70-73	1005066	62.6	84.5	165	181	237	76.2	282	549
76-79	1005084	87.5	89.0	184	197	262	82.6	313	597
82-86	1005105	104	98.5	194	222	277	88.9	334	654
88-92	1005123	127	105	203	230	298	93.7	355	692

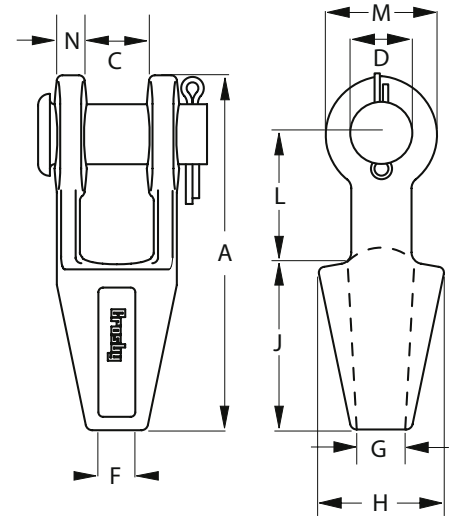
# crosby wire rope end terminals

## Crosby® Open Spelter Sockets

G-416 / S-416



- Forged steel sockets through 1-1/2", cast alloy steel 1-5/8" through 4".
- Spelter socket terminations have an efficiency rating of 100%, based on the catalogue strength of wire rope. Ratings are based on recommended use with 6 x 7, 6 x 19, or 6 x 37, IPS or XIP (EIP), XXIP (EEIP), RRL, FC, or IWRC wire rope.



All cast steel sockets 40mm and larger are magnetic particle inspected and ultrasonic inspected. Proof testing available on special order. Drawing illustrates one groove used on sockets 6mm through to 19mm. Sizes 22mm through to 38mm use 2 grooves. Sizes 40mm and larger use 3 grooves.

G-416 S-416  
Open Spelter Sockets

Rope Dia mm	Structural Strand Dia mm	Stock No.		Weight Each kgs	Dimensions mm									
		G-416 Galv	G-416 S.C		A	C	D	F	G	H	J	L	M	N
6-7	-	1039619	1039628	0.50	116	19.1	17.5	9.65	17.5	39.6	57.0	39.6	33.3	9.10
8-10	-	1039637	1039646	0.59	123	20.6	20.6	12.7	20.6	42.9	57.0	44.5	38.1	11.2
11-13	-	1039655	1039664	1.02	141	25.4	25.4	14.2	23.9	47.8	63.5	51.0	47.8	12.7
14-16	12-13	1039673	1039682	1.63	171	31.8	30.2	17.5	28.7	57.0	76.0	63.5	57.0	14.2
18	14-16	1039691	1039708	2.64	202	38.1	35.1	20.6	31.8	66.5	89.0	76.0	66.5	15.7
20-22	18-19	1039717	1039726	4.38	235	44.5	41.4	23.9	38.1	82.5	102	89.0	79.5	20.3
24-26	20-22	1039735	1039744	7.03	268	51.0	51.0	28.7	44.5	95.5	114	102	95.5	22.4
28-30	24-26	1039753	1039762	9.75	300	57.0	57.0	31.8	51.0	105	127	117	105	25.4
32-35	28	1039771	1039780	14.1	335	63.5	63.5	38.1	57.0	121	140	127	121	28.7
38	30-32	1039799	1039806	21.4	384	76.0	70.0	41.4	70.0	133	152	152	137	30.2
*40-42	33-35	1039815	1039824	24.9	413	76.0	76.0	44.5	76.0	140	165	165	146	33.3
*44-48	36-40	1039833	1039842	37.2	464	89.0	89.0	51.0	79.5	162	191	178	165	39.6
*50-54	42-45	1039851	1039860	59	546	102	95.5	57.0	95.5	187	216	229	178	46.0
*56-60	46-48	1039879	1039888	76	597	114	108	36.5	102	210	229	254	197	54.0
*64-67	50-54	1041633	1041642	114	648	127	121	73.0	114	235	248	274	216	60.5
*70-73	56-62	1041651	1041660	143	692	133	127	79.0	124	267	279	279	229	73.0
*75-80	64-67	1041679	1041688	172	737	146	133	86.0	133	22	305	287	241	76.0
*82-86	70-73	1041697	1041704	197	784	159	140	92.0	146	302	330	300	254	79.0
*88-92	76-80	1041713	1041722	255	845	171	152	98.5	165	314	356	318	274	82.5
*94-102	-	1041731	1041740	355	921	191	178	108	184	346	381	343	318	89.0

\* Cast Alloy Steel.



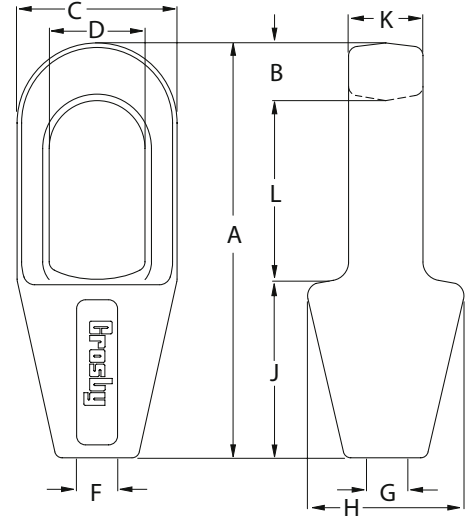
# crosby wire rope end terminals

## Crosby® Closed Spelter Sockets

G-417 / S-417



- Forged steel sockets through 1-1/2", cast alloy steel 1-5/8" through 4".
- Spelter socket terminations have an efficiency rating of 100%, based on the catalogue strength of wire rope. Ratings are based on recommended use with 6 x 7, 6 x 19, or 6 x 37, IPS or XIP (EIP), XXIP (EEIP), RRL, FC, or IWRC wire rope.



All cast steel sockets 40mm and larger are magnetic particle inspected and ultrasonic inspected. Proof testing available on special order. Drawing illustrates one groove used on sockets 6mm through to 19mm. Sizes 22mm through to 38mm use 2 grooves. Sizes 40mm and larger use 3 grooves.

### G-417 S-417 Closed Spelter Sockets

Rope Dia mm	Structural Strand Dia mm	Stock No.		Weight Each kgs	Dimensions mm									
		G-417 Galv	G-417 S.C		A	B	C	D*	F	G	H	J	K	L
6-7	-	1039897	1039904	0.23	116	12.7	39.6	22.4	9.65	17.5	39.6	57.2	12.7	46.0
8-10	-	1039913	1039922	0.34	125	15.8	42.9	24.6	12.7	20.6	42.9	57.2	17.5	52.3
11-13	-	1039931	1039940	0.68	140	17.5	51.0	29.5	14.2	23.9	51.0	63.5	22.5	58.7
14-16	12-13	1039959	1039968	1.13	162	20.6	67.0	35.8	17.5	30.2	67.0	76.2	25.4	65.0
18	14-16	1039977	1039986	1.92	194	26.9	76.2	42.2	22.4	33.3	70.0	89.0	31.8	77.7
20-22	18-19	1039995	1040000	3.28	226	33.3	92.0	49.3	25.4	38.1	82.5	102	38.1	90.5
24-26	20-22	1040019	1040028	4.76	254	36.6	105	58.5	28.7	44.5	95.5	114	44.5	103
28-30	24-26	1040037	1040046	6.46	283	39.6	114	65.0	31.8	51.0	105	127	51.0	116
32-35	28	1040055	1040064	8.95	309	41.4	127	71.0	38.1	58.5	119	138	56.5	129
38	30-32	1040073	1040082	13.24	355	49.3	137	81.0	41.4	70.5	132	151	62.5	155
†40-42	33-35	1040091	1040108	16.32	390	54.0	146	82.5	44.5	76.2	140	165	70.0	171
†44-48	36-40	1040117	1040126	25.96	445	55.5	11	95.5	51.0	79.5	162	191	76.2	198
†50-54	42-45	1040135	1040144	35.83	505	62.0	194	111	57.2	95.5	187	216	82.5	224
†56-60	46-48	1040153	1040162	47.62	546	70.0	216	127	66.8	105	210	229	92.0	248
†64-67	50-54	1041759	1041768	63.50	597	79.5	241	140	74.5	114	235	248	102	270
†70-73	56-62	1041777	1041786	99.79	645	79.5	273	159	79.5	124	259	279	124	286
†75-80	64-67	1041795	1041802	125	689	85.6	292	171	86.0	133	292	305	133	298
†82-86	70-73	1041811	1041820	142	743	102	311	184	92.0	146	311	330	146	311
†88-92	76-80	1041839	1041848	181	787	102	330	197	98.5	160	330	356	159	330
†94-102	-	1041857	1041866	246	845	108	362	216	108	184	362	381	178	356

†Cast Alloy Steel.

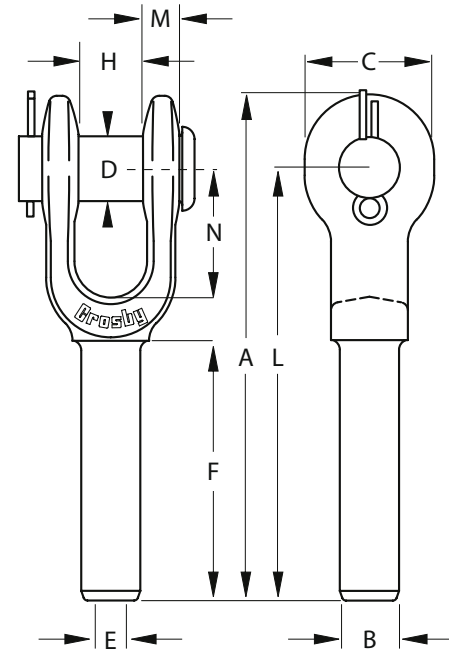
# crosby wire rope end terminals

## Crosby® Open Swage Sockets

S-501



- Forged from special bar quality carbon steel, suitable for cold forming.
- Swage socket terminations have an efficiency rating of 100% based on the catalogue strength of the wire rope.
- Hardness controlled by spheroidal annealing.
- Stamp for identification after swaging without concern for fractures (as per directions in National Swaging Brochure)
- Swage sockets incorporate a reduced machined area of the shank which is equivalent to the proper "After Swage" dimension. Before swaging, this provides for an obvious visual difference in the shank diameter. After swaging, a uniform shank diameter is created allowing for a QUIC-CHECK® and permanent visual inspection opportunity.
- Designed to quickly determine whether the socket has been through the swaging operation and assist in field inspections, it does not eliminate the need to perform standard production inspections which include gauging for the proper "After Swage" dimensions of proof loading.
- US Patent 5.152.630 and foreign equivalents.



Note: S-501 Swage Sockets are recommended for use with 6 x 19 or 6 x 37, IPS or XIP (EIP, XXIP (EEIP), RRL, FC or IWRC wire rope. Before using any national swage fitting with any other type lay, construction or grade of wire rope, it is recommended that the termination be tested to destruction and documented to prove the adequacy of the assembly to be manufactured.

In accordance with ANSI B30.9, all slings terminated with swage sockets shall be proof loaded.

### S-501 Open Swage Sockets

S-501 Open Socket Specifications													Press / Die Data					
S-501 Stock No.	Rope Size mm*	Weight Each kgs	Before Swage Dimensions									Max After Swage Dim mm	Die Description	Stock No.		Side Load		
			A	B	C	D	E	F	H	L	M			N	500,1000 1500 Ton 5 x 7	1500,3000 Ton 6 x 12	1500 Ton 6 x 12	3000 Ton 6 x 12
1039021	6	0.24	122	12.7	35.1	17.5	6.85	54.0	17.5	102	9.65	38.1	11.7	1/4 Socket	1192845	-	-	-
1039049	8	0.51	159	19.6	41.1	20.6	8.65	81.0	20.6	135	11.9	44.5	18.0	5/16-3/8 Socket	1192863	-	-	-
1039067	9-10	0.59	159	19.6	41.1	20.6	10.4	81.0	20.6	135	11.9	44.5	18.0	5/16-3/8 Socket	1192863	-	-	-
1039085	11-12	0.94	198	24.9	51.0	25.4	12.2	108	25.4	170	14.2	51.0	23.1	7/16-1/12 Socket	1192881	-	-	-
1039101	13	0.94	198	24.9	51.0	25.4	14.0	108	25.4	170	14.2	51.0	23.1	7/16-1/12 Socket	1192881	-	-	-
1039129	14	2.12	241	31.8	60.5	30.2	15.5	135	31.8	207	17.3	57.0	29.5	9/16-5/8 Socket	1192907	-	-	-
1039147	16	2.05	241	31.8	60.5	30.2	17.0	135	31.8	207	17.3	57.0	29.5	9/16-5/8 Socket	1192907	-	-	-
1039165	18-20	3.62	294	39.4	70.0	35.1	20.3	162	38.1	254	19.8	70.0	36.1	3/4 Socket	1192925	-	-	-
1039183	22	5.23	341	43.2	79.5	41.1	23.9	189	44.5	295	23.9	82.5	39.4	7/8 Socket	1192943	-	-	-
1039209	24-26	8.07	393	50.5	93.5	51.0	26.9	216	51.0	340	26.9	95.5	45.7	1 Socket	1192961	-	-	-
1039227	28	11.5	440	57.0	103	57.0	30.2	243	57.0	381	30.2	108	52.0	1 1/8 Socket	1192989	-	-	-
1039245	32	16.1	484	64.5	114	63.5	33.8	270	63.5	419	31.0	121	85.5	1 1/4 Socket	1199003	-	-	-
1039263	34-36	19.8	532	71.0	127	63.5	36.8	297	63.5	461	35.1	133	65.0	1 3/8 Socket	1193023	-	-	-
1039281	38-40	26.5	581	78.0	140	70.0	40.1	324	76.0	502	42.9	146	71.5	1 1/2 Socket	1193041	1191267	1195355	1195192
1039307	44	40.3	676	86.0	170	89.0	47.2	378	89.0	584	53.5	171	77.5	1 3/4 Socket	1193069	1191276	1195367	1195209
1042767	48-52	66	799	100	203	95.5	53.5	432	102	683	60.0	203	90.5	2 Socket	1193087	1191294	1195379	1195218

\* Maximum Proof Load shall not exceed 50% of XXIP rope catalogue breaking strength.

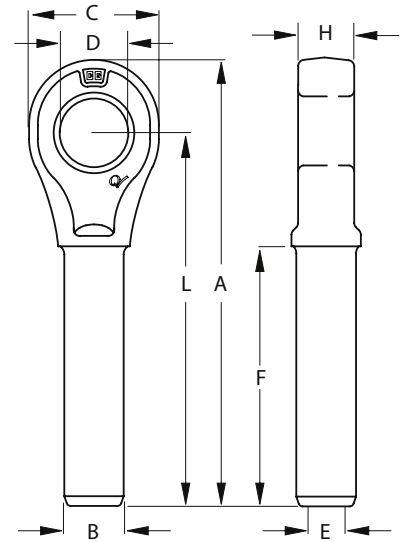
# crosby wire rope end terminals

## Crosby® Closed Swage Sockets

### S-502



- Forged from special bar quality carbon steel, suitable for cold forming.
- Swage socket terminations have an efficiency rating of 100% based on the catalogue strength of the wire rope.
- Hardness controlled by spheroidal annealing.
- Stamp for identification after swaging without concern for fractures (as per directions in National Swaging Brochure).
- Swage sockets incorporate a reduced machined area of the shank which is equivalent to the proper "After Swage" dimension. Before swaging, this provides for an obvious visual difference in the shank diameter. After swaging, a uniform shank diameter is created allowing for a QUIC-CHECK® and permanent visual inspection opportunity.
- Designed to quickly determine whether the socket has been through the swaging operation and assist in field inspections, it does not eliminate the need to perform standard production inspections, which include gauging for the proper "After Swage" dimensions of proof loading.
- US Patent 5.152.630 and foreign equivalents.



Note: S-501 Swage Sockets are recommended for use with 6 x 19 or 6 x 37, IPS or XIP (EIP, XXIP (EEIP), RRL, FC or IWRC wire rope. Before using any national swage fitting with any other type lay, construction or grade of wire rope, it is recommended that the termination be tested to destruction and documented to prove the adequacy of the assembly to be manufactured.

In accordance with ANSI B30.9, all slings terminated with swage sockets shall be proof loaded.

### S-502 Closed Swage Sockets

S-501 Open Socket Specifications											Press / Die Data					
S-502 Stock No.	Rope Size mm*	Weight Each kgs	Before Swage Dimensions								Max After Swage Dim mm	Die Description	Stock No.		Side Load	
			A	B	C	D	E	F	H	L			500,1000 1500 Ton 5 x 7	1500,3000 Ton 6 x 12	1500 Ton 6 x 12	3000 Ton 6 x 12
1039325	6	0.15	109	12.7	35.1	19.1	6.85	54.0	12.7	89.0	11.7	1/4 Socket	1192845	-	-	-
1039343	8	0.34	138	19.6	41.1	22.4	8.65	81.0	17.0	114	18.0	5/16-3/8 Socket	1192863	-	-	-
1039361	9-10	0.33	138	19.6	41.1	22.4	10.4	81.0	17.0	114	18.0	5/16-3/8 Socket	1192863	-	-	-
1039389	11-12	0.64	176	24.9	51.0	26.9	12.2	108	21.8	146	23.1	7/16-1/2 Socket	1192881	-	-	-
1039405	13	0.64	176	24.9	51.0	26.9	14.0	108	21.8	146	23.1	7/16-1/2 Socket	1192881	-	-	-
1039423	14	1.32	220	31.8	60.5	31.8	15.5	135	28.7	184	29.5	9/16-5/8 Socket	1192907	-	-	-
1039441	16	1.29	220	31.8	60.5	31.8	17.0	135	28.7	184	29.5	9/16-5/8 Socket	1192907	-	-	-
1039469	18-20	2.27	261	39.4	73.0	36.6	20.3	162	33.3	219	36.1	3/4 Socket	1192925	-	-	-
1039487	22	3.08	303	43.2	79.0	42.9	23.9	189	38.1	257	39.4	7/8 Socket	1192943	-	-	-
1039502	24-26	4.72	344	50.5	92.0	52.5	26.9	216	44.5	292	45.7	1 Socket	1192961	-	-	-
1039520	28	6.72	382	57.0	102	58.5	30.2	243	51.0	324	52.0	1 1/8 Socket	1192989	-	-	-
1039548	32	9.78	430	64.5	114	65.0	33.8	270	57.0	365	58.5	1 1/4 Socket	1199003	-	-	-
1039566	34-36	12.9	473	71.0	127	65.0	36.8	297	57.0	400	65.0	1 3/8 Socket	1193023	-	-	-
1039584	38-40	17.3	511	78.0	140	71.5	40.1	324	63.5	432	71.5	1 1/2 Socket	1193041	1191267	1195355	1195192
1039600	44	23.1	598	86.0	159	90.5	47.2	378	76.0	508	77.5	1 3/4 Socket	1193069	1191276	1195367	1195209
1042589	48-52	40.5	702	100	184	96.5	53.5	432	82.5	584	90.5	2 Socket	1193087	1191294	1195379	1195218

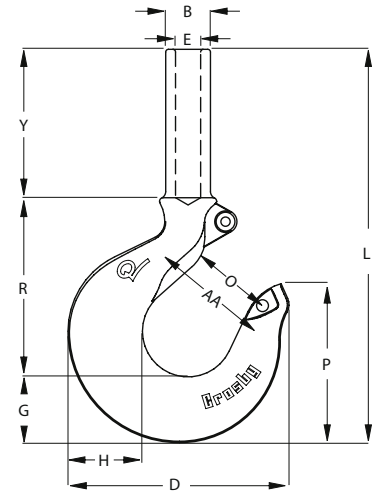
\* Maximum Proof Load shall not exceed 50% of XXIP rope catalogue breaking strength.

# crosby wire rope end terminals

## Crosby® Shank Hooks for Swaging



- Wide range of sizes available:
  - Working load limit: 0.35 - 14 tonnes
  - Wire rope sizes: 5mm - 30mm
- Swage shank hook terminations have an efficiency rating of 95% based on the catalogue strength of wire rope.
- Quenched and tempered. Heat treat process allows for ease of swaging.
- Forged Carbon Steel.
- Design factor of 5 to 1.
- Black oxide finish on body (Shank is uncoated).
- Utilizes standard Crosby 319N shank hooks with interlocking hook tip. Each hook has a pre-drilled cam which can be equipped with a latch.
- Utilizes standard National Swage swaging dies.
- All hooks incorporate Crosby's patented QUIC-CHECK® markings (Angle indicators and Throat Deformation Indicators).



Note: For use with 6 x 19 or 6 x 37, IPS or XIP (EIP), XXIP (EEIP), RRL, FC or IWRC wire rope. Before using any Crosby fitting with any other type lay, construction or grade of wire rope, it is recommended that the termination be tested to destruction and documented to prove the adequacy of the assembly to be manufactured. Refer to swage socket or swage button instructions in the National Swage Swaging Products and procedures brochure for proper swaging techniques.

### S-319SWG Shank Hooks for Swaging

Wire Rope Size mm	Hook ID Code	working load limit Tons	S-319SWG Stock No.	Weight Each kgs	Required Swaging Die		Maximum After Swage Dia mm
					Die Description (in.)	Die Stock No.	
5	DC	0.4	1053002	0.25	1/8 Button	1191621	10.2
6-7	FC	0.7	1053011	0.35	1/4 Socket	1192845	11.7
8	GC	1.1	1053020	0.57	1/4 Button	1191621	14.7
8	HC	1.1	1053039	0.83	3/8 Socket	1192863	18.0
9-10	HC	1.6	1053048	0.82	3/8 Socket	1192863	18.0
11	IC	2.1	1053057	1.65	1/2 Socket	1192881	23.1
12-13	IC	2.8	1053066	1.62	1/2 Socket	1192881	23.1
14-15	JC	3.5	1053075	3.34	5/8 Socket	1192907	29.5
16	JC	4.3	1053084	3.31	5/8 Socket	1192907	29.5
18	KC	6.2	1053093	5.77	3/4 Socket	1192925	36.1
20-22	LC	8.3	1053100	9.97	7/8 Socket	1192949	39.4
24-26	NC	11.0	1053119	14.3	1 Socket	1192961	45.7
28-30	OC**	14.0	1053128	24.4	1 1/8 Socket	1192989	52.1

\* Minimum Ultimate Strength is 5 times the working load limit.

\*\* ID Code "O" is old 319 style hook.

Wire Rope Size mm	S-319SWG Stock No.	Dimensions mm														
		B	D	E	F	G	H	J	K	L	M	O	P	R	Y	AA
5	1053002	11.2	72.5	5.10	16.0	18.5	20.6	23.6	16.0	132	16.0	23.6	79.8	60.5	51.0	38.1
6-7	1053011	12.7	80.0	6.85	17.5	21.3	23.9	24.6	18.0	145	18.0	24.6	56.5	67.0	57.0	51.0
8	1053020	16.5	91.0	8.65	19.1	25.4	29.5	26.9	22.4	162	22.4	26.9	62.0	70.0	63.5	51.0
8	1053039	19.6	101	8.65	20.6	29.0	33.3	30.2	23.9	182	23.9	29.5	70.5	81.5	70.0	51.0
9-10	1053048	19.6	101	10.4	20.6	29.0	33.3	30.2	23.9	182	23.9	29.5	70.5	81.5	70.0	51.0
11	1053057	24.9	123	12.2	25.4	36.6	41.4	38.1	33.3	221	28.7	35.8	88.0	99.5	82.5	63.5
12-13	1053066	24.9	123	14.0	25.4	36.6	41.4	38.1	33.3	221	28.7	35.8	88.0	99.5	82.5	63.5
14-15	1053075	31.8	159	15.5	31.8	46.2	52.5	45.2	42.2	267	36.6	42.9	117	123	95.5	76.0
16	1053084	31.8	159	17.0	31.8	46.2	52.5	45.2	42.2	267	36.6	42.9	117	123	95.5	76.0
18	1053093	39.4	192	20.3	38.1	57.5	67.0	61.0	47.8	321	41.4	56.4	133	152	108	102
20-22	1053100	43.2	212	23.9	41.4	66.0	74.7	66.5	55.5	345	49.3	61.2	145	165	111	102
24-26	1053119	50.5	264	26.9	54.0	76.5	89.0	86.5	68.5	427	60.5	81.0	175	211	137	102
28-30	1053128	57.0	346	30.2	63.5	92.0	117	102	76.0	586	76.0	82.6	223	240	248	165

## WIRELOCK®

- 100% termination efficiency.
- Temperature operating range is -65°F to +240°F.
- Ideal for on site applications.
- No hazardous molten metal.
- Improved fatigue life.
- Pouring temperature without boosting pack is 48°F to 110°F.
- One booster pack if pouring temperature is 35°F to 48°F.
- Two booster packs if pouring temperature is 27°F to 35°F.
- Refer to WIRELOCK® technical manual for more information.



### WIRELOCK® W416-7 Socket Compound

#### Approvals

- Lloyds register of shipping
- Det Norske Veritas
- United States Coast Guard
- Registro Italiano Navale
- Germanischer Lloyd
- United States Navy
- American Bureau of Shipping

W416-7 Kits				Booster pack
Kit Size	Kit Per Case	Stock No.	Weight Each kgs	Stock No.
100	20	1039602	0.28	1039603
250	12	1039604	0.57	1039605
500	12	1039606	1.15	1039607
1000	12	1039608	2.08	1039609
2000	12	1039610	4.08	1039611

### Guide to amount WIRELOCK® required

Wire Rope Size		Wirelock® Required (cc)	Wire Rope Size		Wirelock® cc
mm	In.		mm	in.	
6-7	1/4	9	44	1 3/4	700
8	5/16	17	48	1 7/8	700
9-10	3/8	17	51	2	1265
11	7/16	35	54	2 1/8	1265
13	1/2	35	56	2 1/4	1410
14	9/16	52	60	2 3/8	1410
16	5/8	52	64	2 1/2	1830
20	3/4	86	67	2 5/8	1830
22	7/8	125	70	2 3/4	2250
26	1	160	76	3	3160
28	1 1/8	210	82	3 1/4	3795
32	1 1/4	350	88	3 1/2	4920
36	1 3/8	350	94	3 3/4	5980
40	1 1/2	420	102	4	7730
42	1 5/8	495	-	-	-



# terms & conditions

## GENERAL

All sales contracts of SWR Ltd. (herein referred to as "the Seller") shall be deemed to incorporate these conditions except in so far as these conditions are varied by any special conditions agreed in writing between the parties. Any terms and conditions in the purchase order which are inconsistent with these conditions shall have no effect.

## CATALOGUES

Catalogues, price lists and any advertising matter published by the Seller are intended only to give an indication of the general nature of the goods available and nothing contained in any such catalogue, list or other matter shall be or be deemed to be a representation by the Seller or a condition or warranty affecting any goods sold.

## PRICES

(i) No quotation made by the Seller shall be or be deemed to be an offer to sell goods at the price or prices stated in such quotation, unless otherwise expressly stated all quotations shall be valid for a fixed period of 60 days only.

(ii) Unless otherwise expressly agreed in writing the price payable for all goods supplied by the Seller shall be the price ruling at the date of despatch plus value added tax thereon at the rate ruling at the date of despatch. All prices are subject to change.

## PAYMENT

(i) All goods shall be paid for in full by the Purchaser to the Seller at the time of ordering, by cash, cheque or by credit card.

(ii) Where account facilities apply, having been expressly agreed in writing by the Seller, the price shall be paid in full by the Purchaser to the Seller within 30 days of the date of the invoice.

(iii) The Seller reserves the right to charge interest at a rate two percent above the Barclays Bank base rate from the date when the price falls due for payment until the date on which such payments are actually received by the Seller, and in the case of any default in payment the Purchaser shall give the Seller every assistance in the repossession of the goods in respect of which payment has not been made.

## TRANSFER OF TITLE

(i) Title to goods shall only pass to the Purchaser from the date of payment in full of all sums payable to the Seller under the contract by which those goods were supplied or any other contract. Until such time, goods remain the absolute property of the Seller and the Purchaser shall keep them insured to their full invoice value. Such goods shall be stored in such a way that they are readily identifiable and the Seller shall be entitled to repossess such goods at its entire discretion and at any time prior to payment in full therefore. The Purchaser hereby grants the Seller, its servants and agents a licence to enter upon the Purchaser's premises for the purpose of repossessing the same. Such repossession shall not affect in any way the continued existence of any contract between the parties.

(ii) If goods in which title has not passed to the Purchaser are subjected to any process, addition or treatment, the property in the goods so processed, added to or treated, shall be vested in the Seller until title has passed.

(iii) All goods sold by the Purchaser to third parties before title has passed to the Purchaser, shall be sold as agent for the Seller and all proceeds received from such sales shall be held by the Purchaser in trust for the Seller, until payment in full of all amounts outstanding has been received by the Seller.

(iv) Notwithstanding that property in any goods has not passed to the Purchaser, the Seller shall be entitled to sue the Purchaser for the price of such goods if not paid on the due date.

## DELIVERY

(i) Any time for the delivery stated by the Seller will be an estimate only on the likely time required to effect delivery from the date of receipt by the Seller of full and final instructions. The Seller will make every reasonable effort to comply with such estimate but the Purchaser shall have no right to damages or to cancel any contract with the Seller by reason only of failure on the part of the Seller to meet any stated delivery time.

(ii) The Seller will endeavour to comply with reasonable requests by the Purchaser for postponement of any stated delivery date but shall be under no enforceable obligation to do so. In the event of any such postponement at the request of the Purchaser, the Purchaser shall pay to the Seller on demand all costs and expenses thereby incurred including a reasonable charge for storage thereby occasioned.

(iii) When the goods are sold "carriage paid" by the Seller, delivery shall be deemed to take place at the moment the goods are lifted from the delivery vehicle and thereafter the goods shall be at the risk of the Purchaser in all respects.

## DAMAGE IN TRANSIT

No claim for goods damaged or lost in transit will be accepted by the Seller unless written notification of such damage or loss is given to the Seller by the Purchaser and the carrier within four working days of receipt of the goods by the Purchaser and all damaged goods are retained by the Purchaser pending inspection by the Seller and carrier.

## LIABILITY

(i) In placing an order with the Seller subject to these conditions the Purchaser is deemed to acknowledge that the Purchaser is not dealing as a consumer and that the provisions of these conditions restricting the liability of the Seller are (save as may be notified in writing by the Purchaser to the Seller before the time at which such order is accepted) fair and reasonable in the light of all circumstances then known to the Purchaser.

(ii) All goods supplied by the Seller are warranted fit for the normal purpose

for which such goods are intended. No liability is accepted if the goods are found not to be fit for any other purpose whether or not such other purpose was made known to the Seller before the contract was made. Any recommendations made by the Seller in such circumstances are made in good faith but as the conditions of use are outside the control of the Seller, it is for the Purchaser to satisfy himself as to the suitability of the goods. Save as aforesaid any conditions or warranty implied or imposed by law as to the quality fitness for the purpose or otherwise however of any goods supplied by the Seller is hereby expressly excluded and in no circumstances (except death or injury caused by the Seller's negligence) shall the Seller be liable for any loss injury or damage caused or arising whether in contract or in tort save as expressly provided and to the extent provided in this condition.

(iii) If any defect in workmanship or materials shall manifest itself in any goods supplied by the Seller within 12 months of the date of delivery thereof provided always that the goods shall have been found not to be to specification the Seller shall have the right at its sole discretion to replace free of cost to the Purchaser (other than the cost of carriage) any such goods or parts thereof and the Purchaser shall be obliged to accept such replacement in full satisfaction of its claim and shall also return to the Seller at the expense of the Purchaser the goods originally delivered or such defective part thereof as may have been replaced. If the Seller shall fail to replace such goods or parts thereof any amount recoverable by way of damages from the Seller by the Purchaser shall be limited to the difference between the value of the goods at the time of the delivery to the Purchaser and no claim whatever by the Purchaser shall entitle the Purchaser to withhold payment of the price of any goods or to any right of set-off against any payment due to the Seller under any contract made by the Seller and the Purchaser, nor will any claim made by the Purchaser entitle the Purchaser to reject any goods supplied and treat the contract as repudiated and any remedy of the Purchaser shall be in damages only as hereinafter provided.

## FORCE MAJEURE

In the event of any act of God, outbreak of war either general or local, riot or other civil commotion, strike lock-out or act or decree of any government or any other matter or thing beyond reasonable control of the Seller, the Seller:

(i) Shall not be liable for any injury or damage of any kind thereby caused or resulting therefrom; and

(ii) May at the sole discretion of the Seller withdraw wholly or in part from the contract without any liability whatsoever. The construction validity and performance of this contract shall be governed by the laws of England and all disputes which may arise under out of or in connection with or in relation to this contract shall be subject to the jurisdiction of the courts of England.



This SWR Brochure is made  
from recycled paper

[steelwirerope.com](http://steelwirerope.com)

SWR LTD, 3-4 Eastman Way, Hemel Hempstead, Herts, HP2 7DU, United Kingdom

Tel: +44 (0)1442 210749 Fax: +44 (0)1442 259918 [sales@steelwirerope.com](mailto:sales@steelwirerope.com)